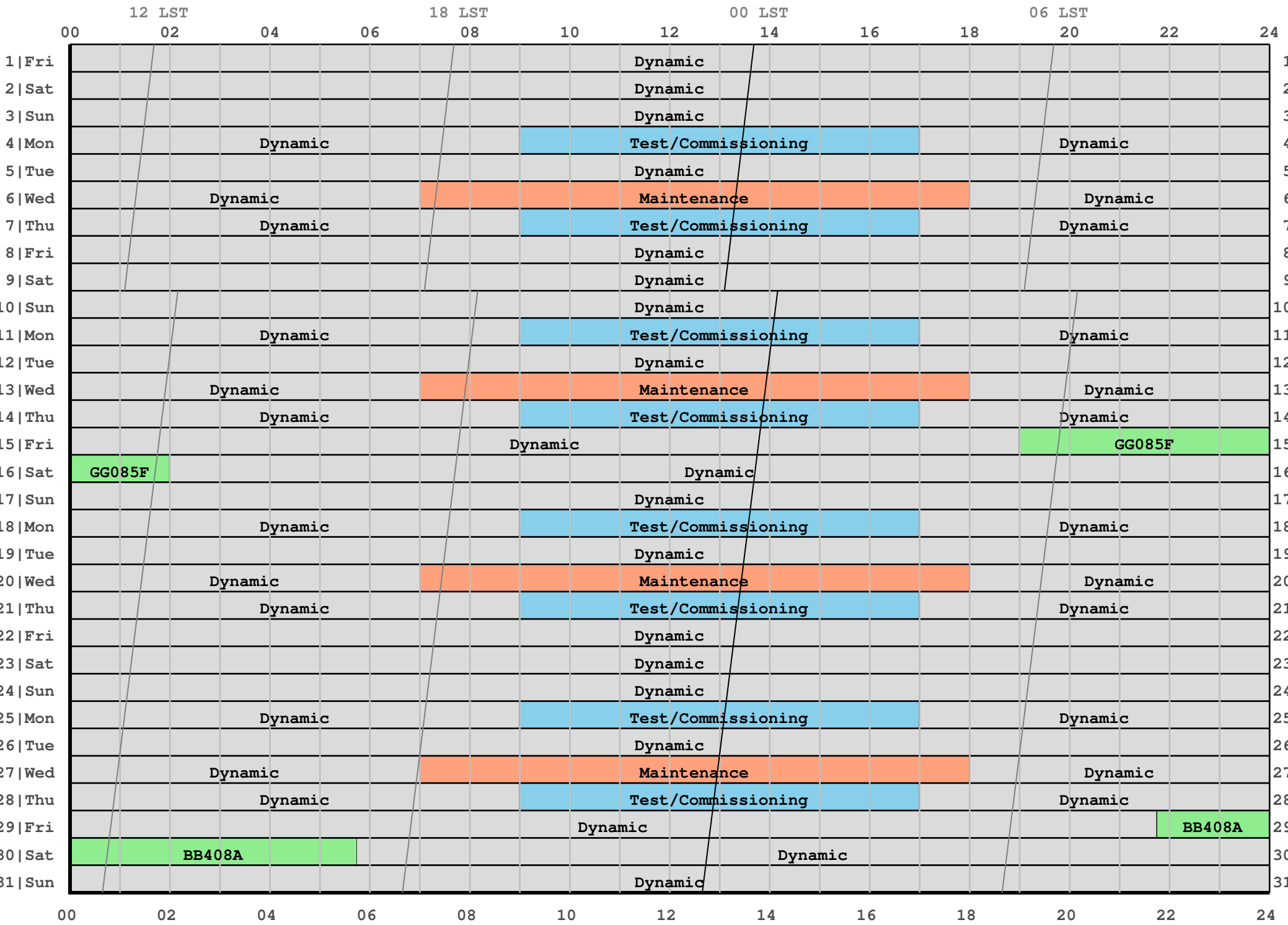


# 2019 March Schedule (in local Mountain Time)



B-configuration: Feb 20 - July 01

### Fixed Date Observations

Project	Day	Mountain Time	Universal Time	Sidereal Day and Time	Comments
GG085F	15	19:00 to 02:00	01:00 to 08:00	65290 05:22 to 12:24	Y27 global
BB408A	29	21:45 to 05:45	03:45 to 11:45	65304 09:03 to 17:04	Y27

### Maintenance, Test/Commissioning, & Other

	Day	Mountain Time	Universal Time	Sidereal Day and Time	Comments
Test/Commissioning	4	09:00 to 17:00	16:00 to 00:00	65279 19:38 to 03:39	
Maintenance	6	07:00 to 18:00	14:00 to 01:00	65281 17:45 to 04:47	
Test/Commissioning	7	09:00 to 17:00	16:00 to 00:00	65282 19:49 to 03:51	
Test/Commissioning	11	09:00 to 17:00	15:00 to 23:00	65286 19:05 to 03:06	
Maintenance	13	07:00 to 18:00	13:00 to 00:00	65288 17:13 to 04:14	
Test/Commissioning	14	09:00 to 17:00	15:00 to 23:00	65289 19:17 to 03:18	
Test/Commissioning	18	09:00 to 17:00	15:00 to 23:00	65293 19:33 to 03:34	
Maintenance	20	07:00 to 18:00	13:00 to 00:00	65295 17:40 to 04:42	
Test/Commissioning	21	09:00 to 17:00	15:00 to 23:00	65296 19:44 to 03:46	
Test/Commissioning	25	09:00 to 17:00	15:00 to 23:00	65300 20:00 to 04:01	
Maintenance	27	07:00 to 18:00	13:00 to 00:00	65302 18:08 to 05:10	
Test/Commissioning	28	09:00 to 17:00	15:00 to 23:00	65303 20:12 to 04:13	