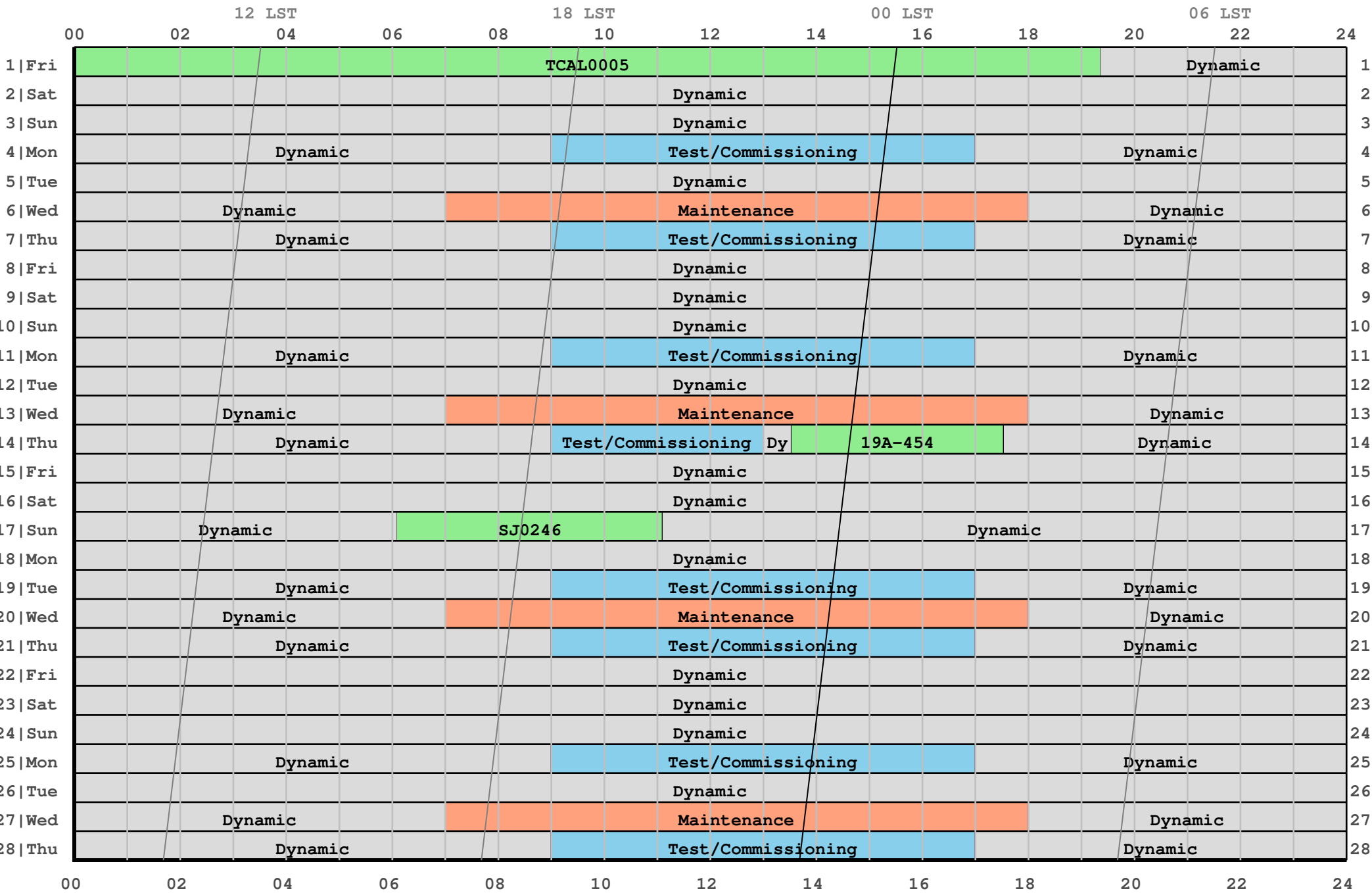


# 2019 February Schedule (in local Mountain Time)



**Fixed Date Observations**

Project	Day	Mountain Time	Universal Time	Sidereal Day and Time	Comments
TCAL0005	1	00:00 to 19:22	07:00 to 02:22	65248 08:34 to 03:59	30hr flux density run
19A-454	14	13:32 to 17:32	20:32 to 00:32	65261 22:59 to 03:00	coordinated with Chandra & ATCA
SJ0246	17	06:06 to 11:06	13:06 to 18:06	65263 15:44 to 20:45	simultaneous with Chandra

**Maintenance, Test/Commissioning, & Other**

	Day	Mountain Time	Universal Time	Sidereal Day and Time	Comments
Test/Commissioning	4	09:00 to 17:00	16:00 to 00:00	65251 17:47 to 01:48	
Maintenance	6	07:00 to 18:00	14:00 to 01:00	65253 15:55 to 02:57	
Test/Commissioning	7	09:00 to 17:00	16:00 to 00:00	65254 17:59 to 02:00	
Test/Commissioning	11	09:00 to 17:00	16:00 to 00:00	65258 18:15 to 02:16	
Maintenance	13	07:00 to 18:00	14:00 to 01:00	65260 16:22 to 03:24	
Test/Commissioning	14	09:00 to 13:00	16:00 to 20:00	65260 18:27 to 22:27	
Test/Commissioning	19	09:00 to 17:00	16:00 to 00:00	65266 18:46 to 02:48	
Maintenance	20	07:00 to 18:00	14:00 to 01:00	65267 16:50 to 03:52	
Test/Commissioning	21	09:00 to 17:00	16:00 to 00:00	65268 18:54 to 02:55	
Test/Commissioning	25	09:00 to 17:00	16:00 to 00:00	65272 19:10 to 03:11	
Maintenance	27	07:00 to 18:00	14:00 to 01:00	65274 17:18 to 04:19	
Test/Commissioning	28	09:00 to 17:00	16:00 to 00:00	65275 19:22 to 03:23	