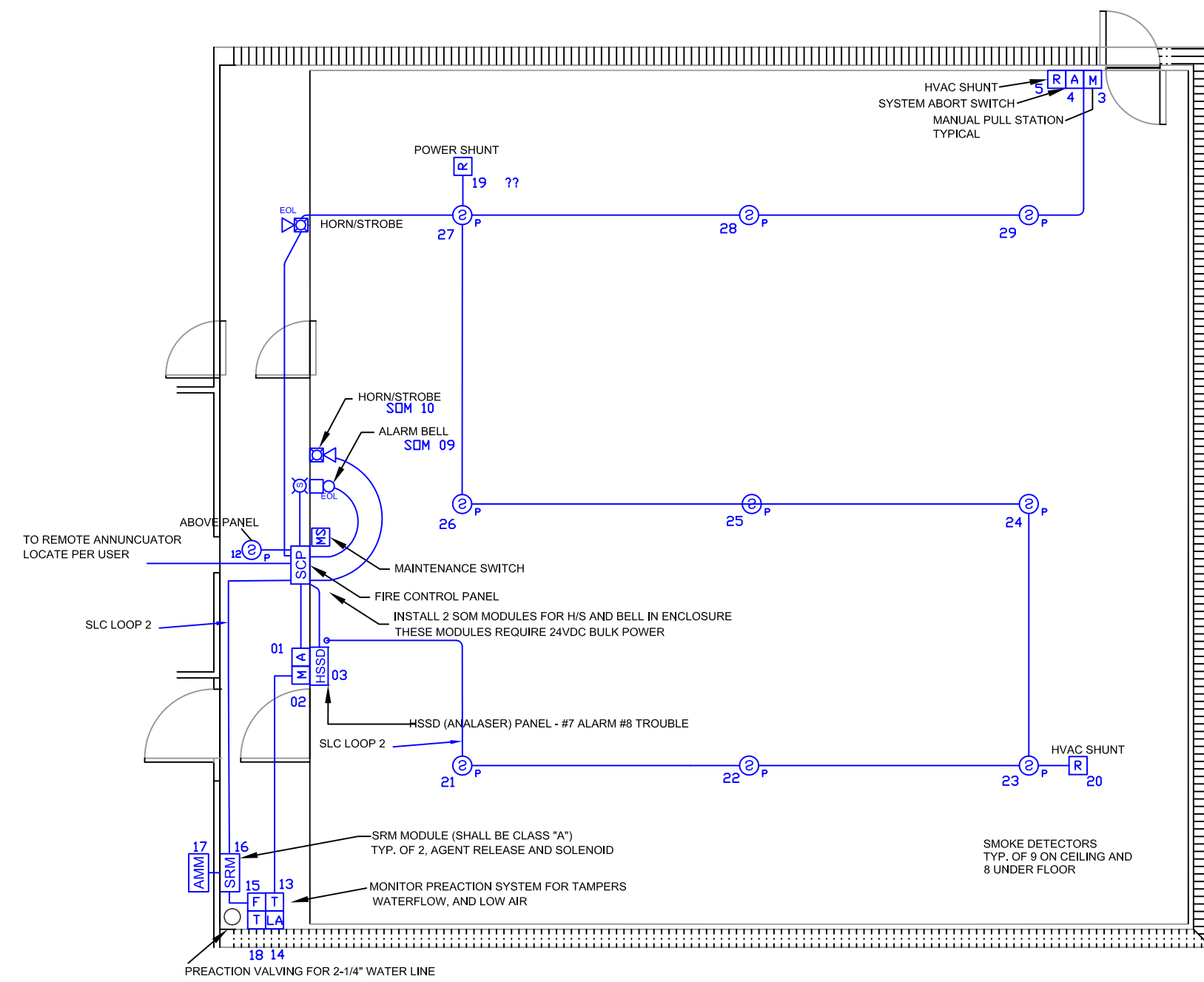
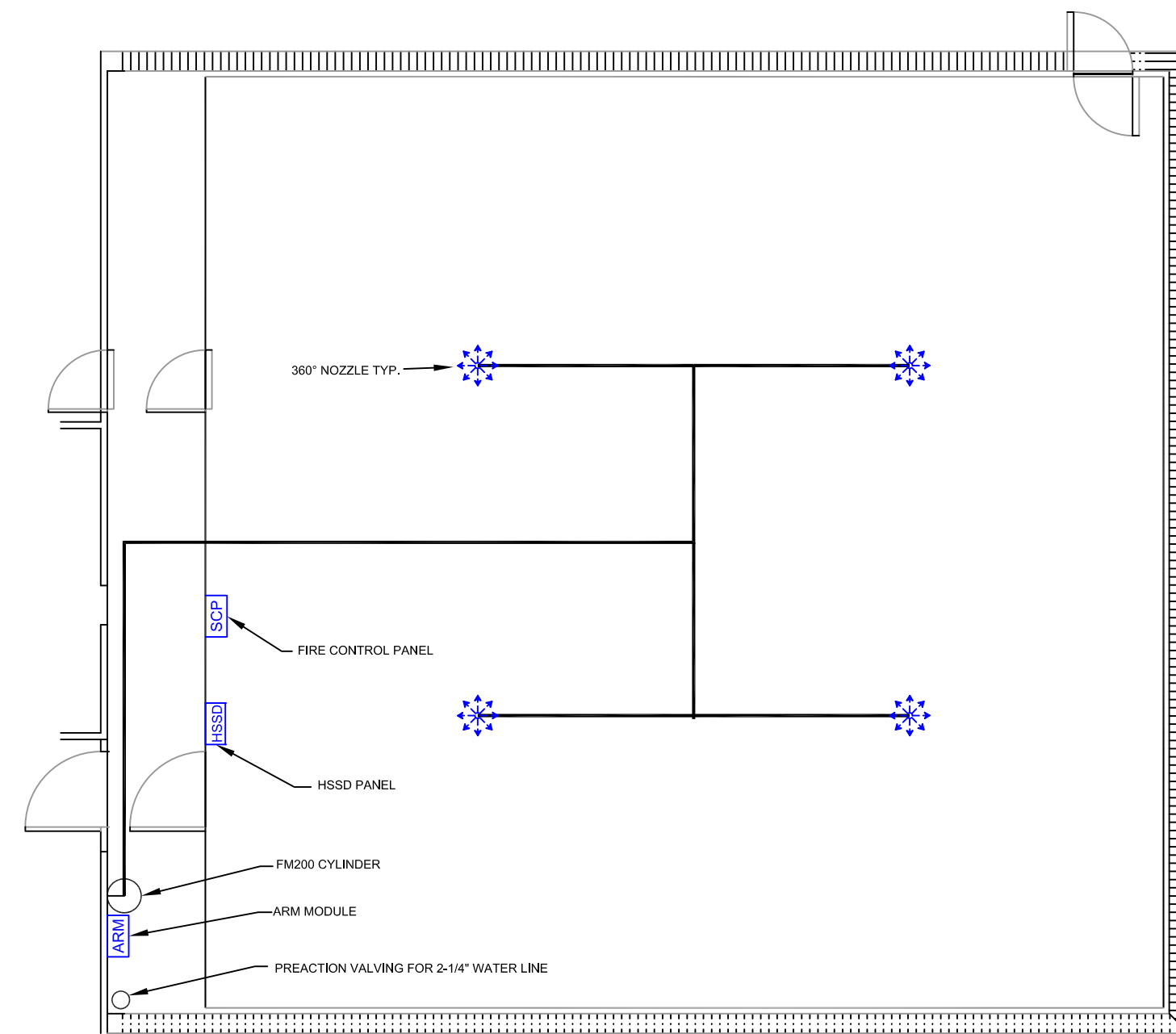


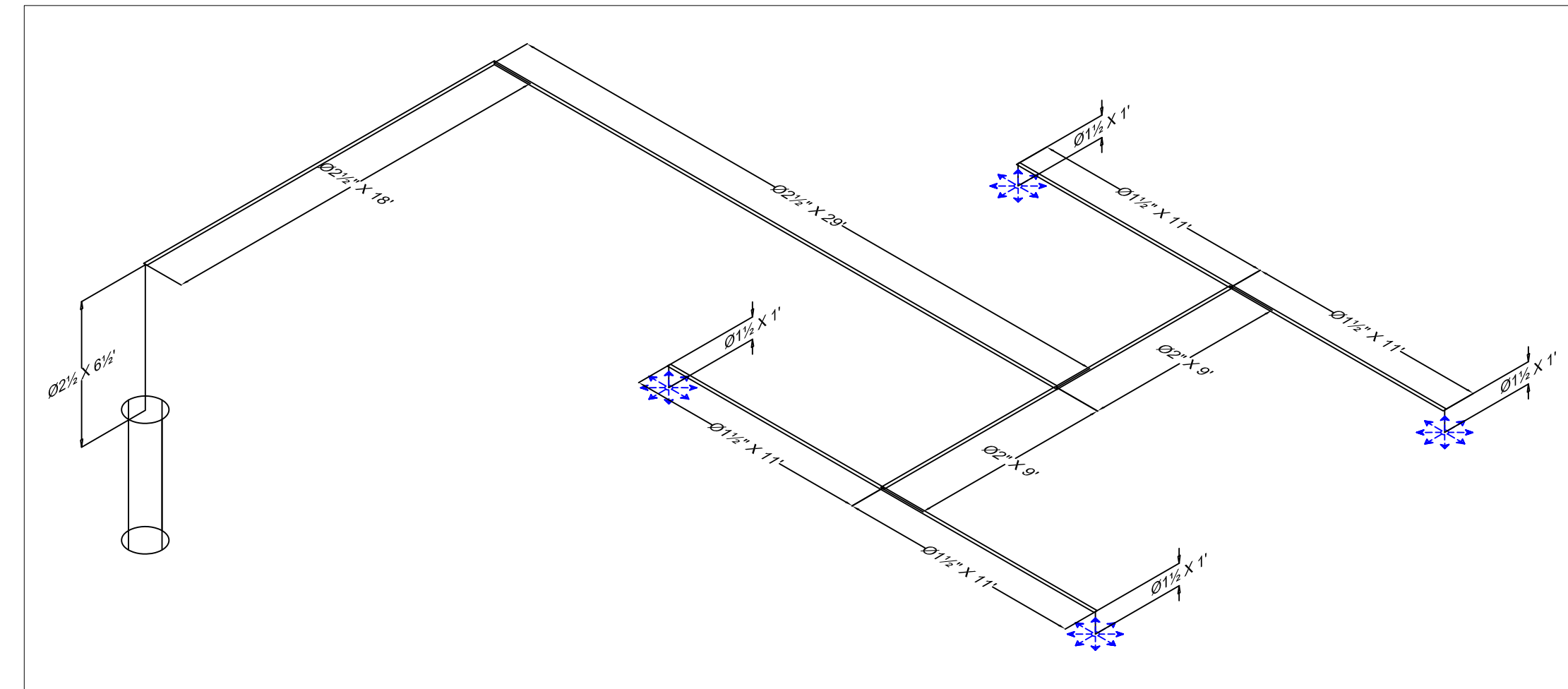
MAKE NO PENETRATIONS IN THE ENCLOSURE WITHOUT WRITTEN APPROVAL



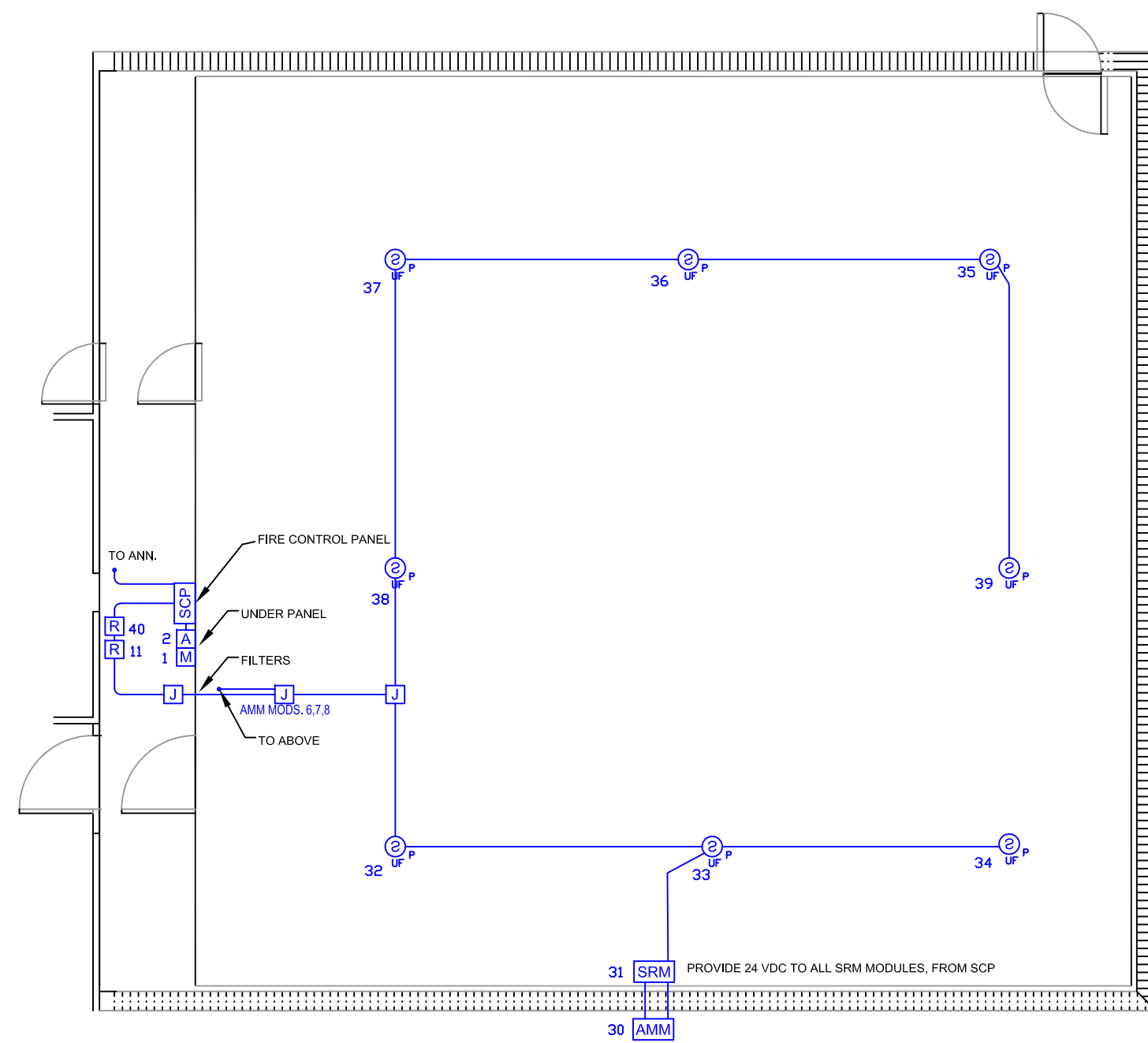
CORRELATOR SHIELD ROOM - ELECTRICAL PLAN
SCALE: 1/8" = 1'-0"



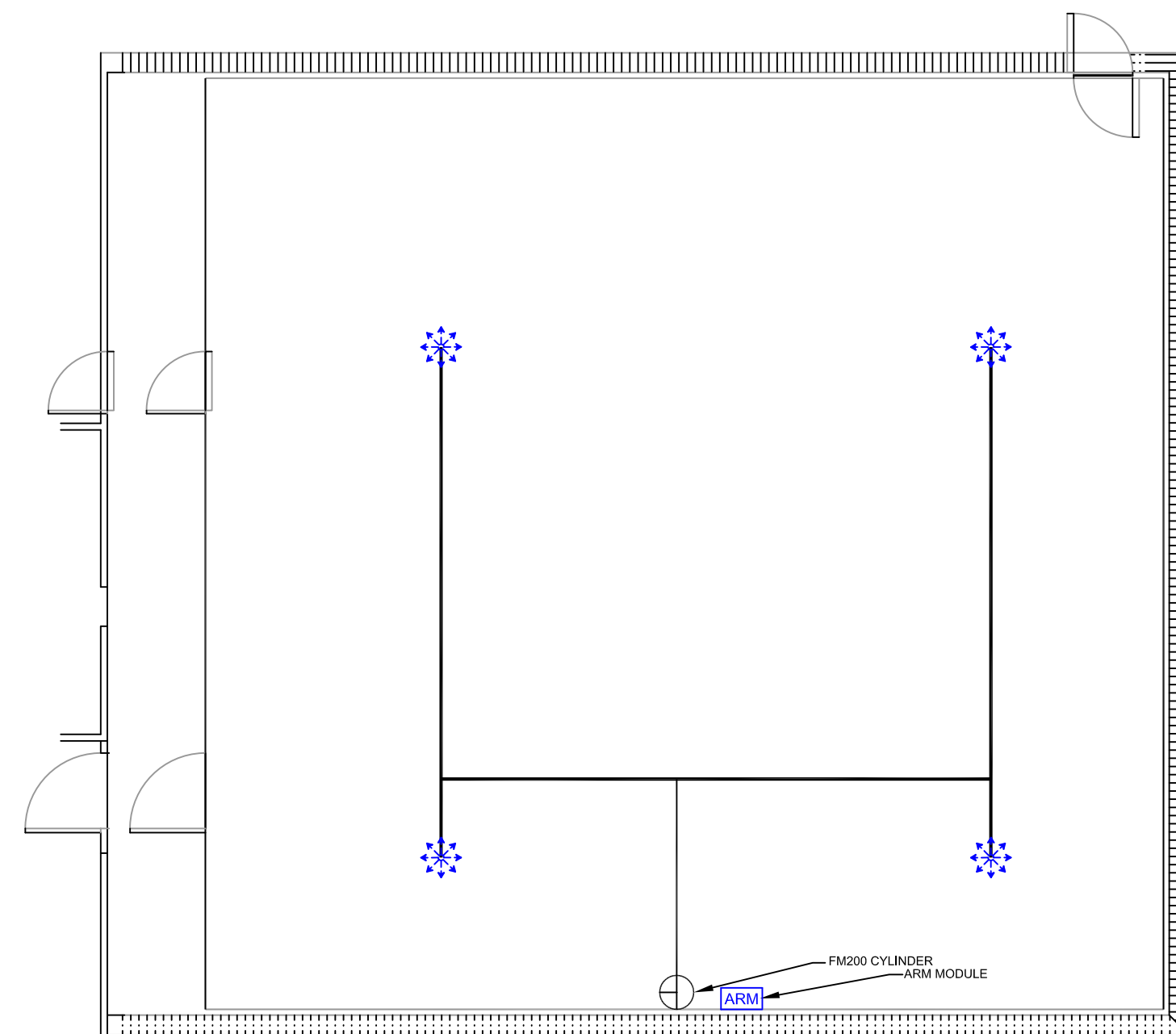
CORRELATOR SHIELD ROOM - MECHANICAL PLAN
SCALE: 1/8" = 1'-0"



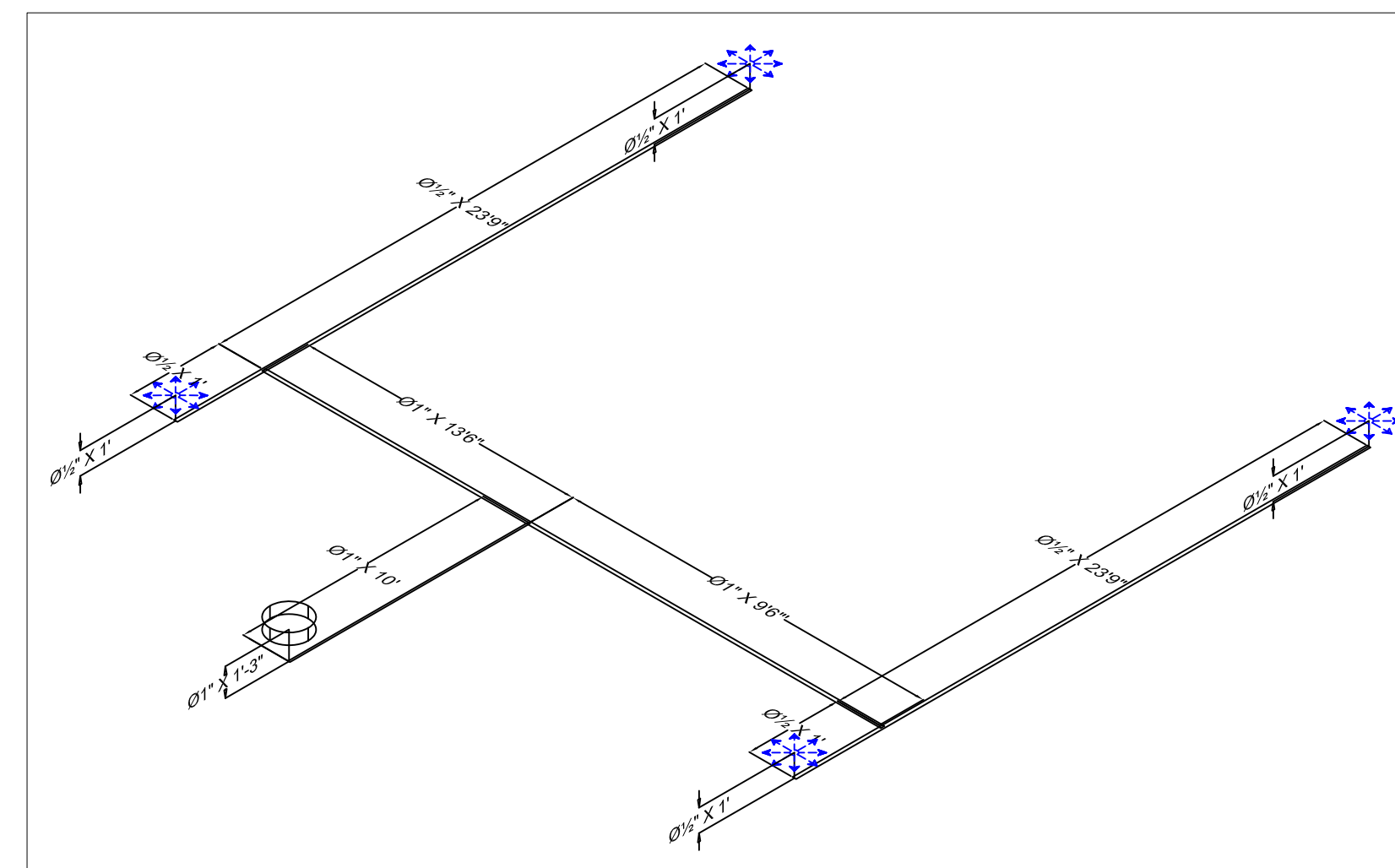
CORRELATOR SHIELD ROOM - PIPING ISOMETRIC



CORRELATOR SHIELD ROOM UNDERFLOOR- ELECTRICAL PLAN
SCALE: 1/8" = 1'-0"



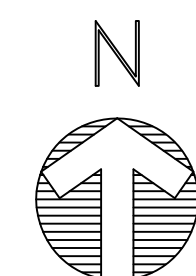
CORRELATOR SHIELD ROOM UNDERFLOOR - MECHANICAL PLAN
SCALE: 1/8" = 1'-0"



CORRELATOR SHIELD ROOM UNDERFLOOR - PIPING ISOMETRIC

HAZARD ANALYSIS

| ENCLOSURE #1 NAME: | CORRELATOR ROOM | OCCUPANCY CLASSIFICATION PER NFPA 101 LIFE SAFETY CODE | ENCLOSURE #2 NAME: | CORRELATOR UNDERFLOOR | OCCUPANCY CLASSIFICATION PER NFPA 101 LIFE SAFETY CODE |
|------------------------|-------------------------|--|------------------------|-------------------------|--|
| ENCLOSURE VOLUME: | 26790.0 CUBIC FEET | OCCUPANCY, NORMAL BUSINESS PURPOSE ORDINARY HAZARD | ENCLOSURE VOLUME: | 3348.8 CUBIC FEET | OCCUPANCY, NORMAL BUSINESS PURPOSE ORDINARY HAZARD |
| ENCLOSURE TEMPERATURE: | 70° F | | ENCLOSURE TEMPERATURE: | 70° F | |
| SYSTEM ELEVATION: | 5000' ASL (ALBUQUERQUE) | | SYSTEM ELEVATION: | 5000' ASL (ALBUQUERQUE) | |
| DESIGN CONCENTRATION: | 7.680% BY VOLUME | | DESIGN CONCENTRATION: | 7.710% BY VOLUME | |
| AGENT REQUIRED: | 715.0 LBS. | | AGENT REQUIRED: | 90.0 LBS. | |



| | | | |
|---|---------------------|-------------------------|--|
| REV. SYM | REV. DRAWING NUMBER | REVISION DESCRIPTION | DATE |
| △ | 0574B03 | AS BUILTS | 8/25/06 |
| △ | 0574A03 | ISSUED FOR CONSTRUCTION | 1/25/06 |
| DRAWN BY: D. MOWRY DESIGNED BY: J. LEPEKA REVIEWED BY: R. WARD DATE: 1/25/06 | | | |
| PROJECT NAME: NRAO ELEC. AND MECH. LAYOUT | | PROJECT NO: N0574 | SHEET OF: 3 OF 5 |
| E&M INTERNATIONAL, INC. 2840 VASSAR N.E., ALBUQUERQUE, NEW MEXICO 87107 (505) 883-8955 FAX: (505) 883-7133 © COPYRIGHT 2004 E&M INTERNATIONAL, INC., ALL RIGHTS RESERVED | | | THIS DRAWING CONTAINS INFORMATION WHICH IS THE PROPERTY OF E&M INTERNATIONAL. THIS DRAWING IS RECEIVED IN CONFIDENCE AND ITS CONTENTS MAY NOT BE DISCLOSED WITHOUT THE PRIOR WRITTEN CONSENT OF E&M INTERNATIONAL. SHEET NO.: FS03 |