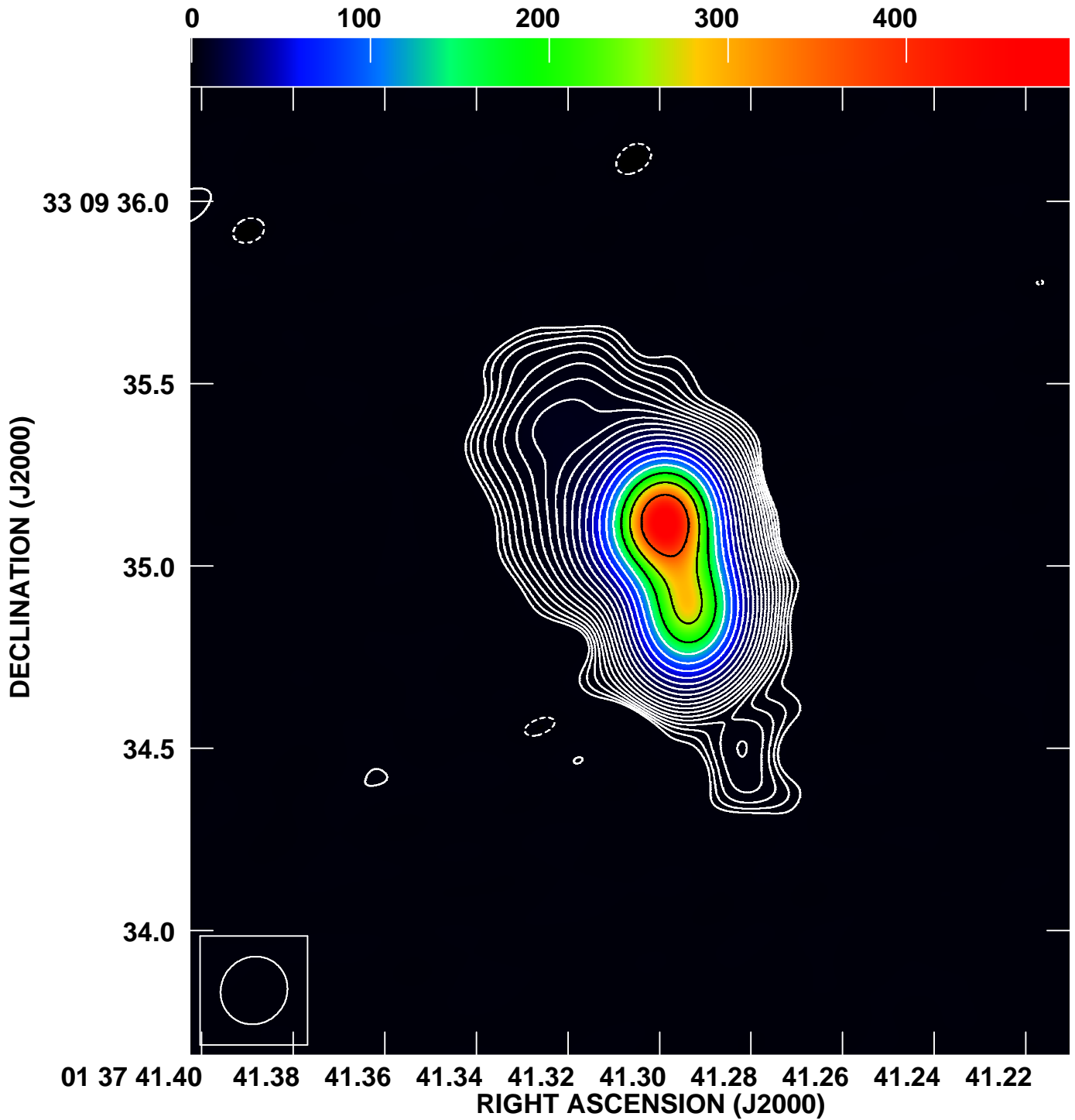


3C48 at 31679.0 MHz



Grey scale flux range= -0.7 491.2 mJy/beam
Cont peak flux = 491.19 mJy/beam
Levs = 0.0005 * (-1, 1, 1.414, 2, 2.828, 4, 5.565, 8, 11.31, 16, 22.63, 32, 45.26, 64, 90.51, 128, 181.0, 256, 362.0, 512, 724.1)