

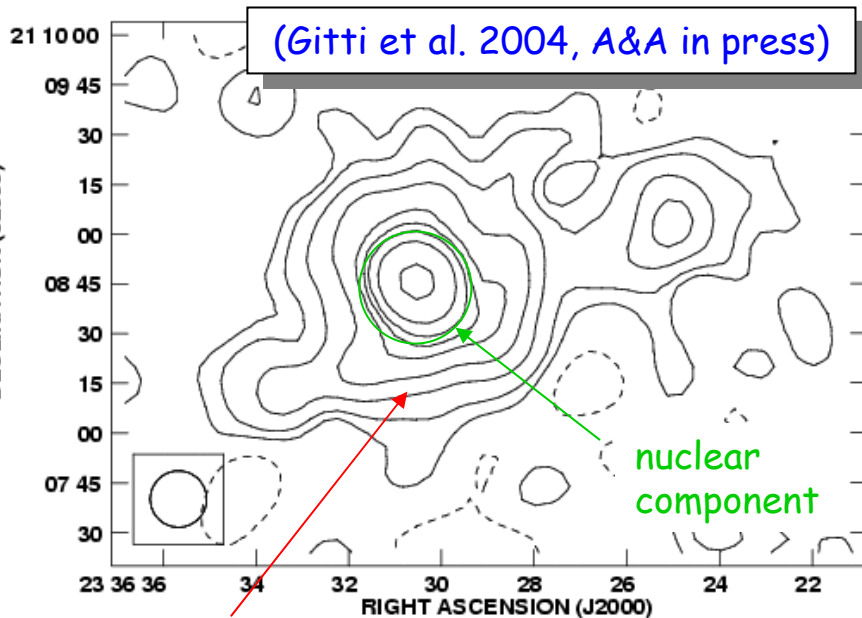
# The cooling flow cluster A2626 and the associated radio emission

Myriam Gitti

University of Innsbruck (Austria)

G. Brunetti, L. Feretti (IRA-CNR Bologna)  
G. Setti (Bologna University)

We studied the radio source in A2626 in order to investigate the interaction between X-ray emitting ICM and radio emitting plasma in cooling flows



1.5 GHz map of the diffuse emission  
→ radio mini-halo

The main properties of the mini-halo can be accounted for by a model for electron re-acceleration in cooling flows (Gitti, Brunetti & Setti 2002)

the physical connection  
between thermal ICM  
and relativistic particles  
is driven by  
the cooling flow

SEE POSTER!