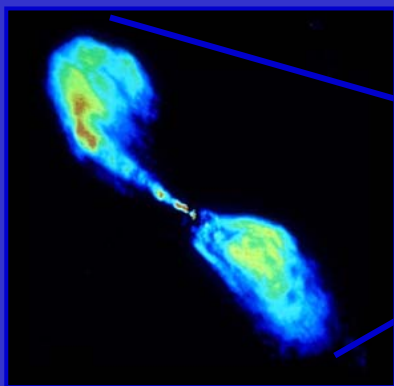


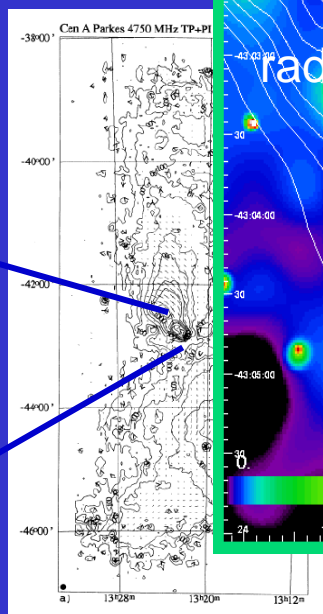
# Cen A & its interaction with the X-ray-emitting ISM

Worrall, Kraft, Hardcastle, Birkinshaw, Forman, Jones, Murray

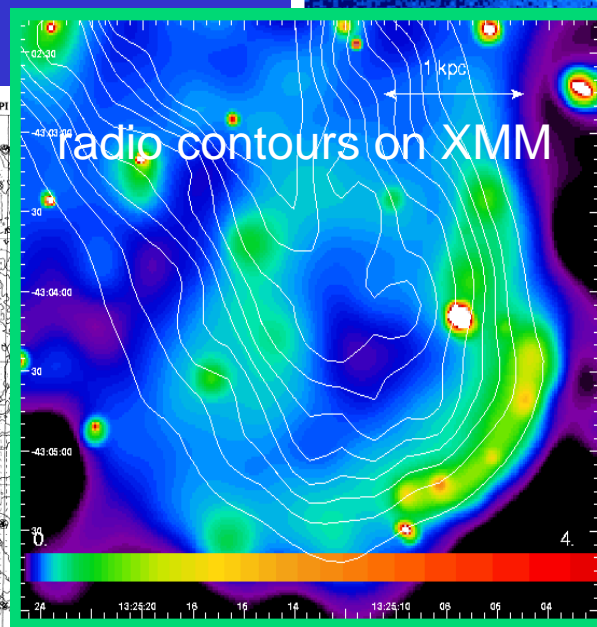
The first definitive evidence for heating by a supersonically-expanding lobe is found in the inner SW lobe of Cen A.



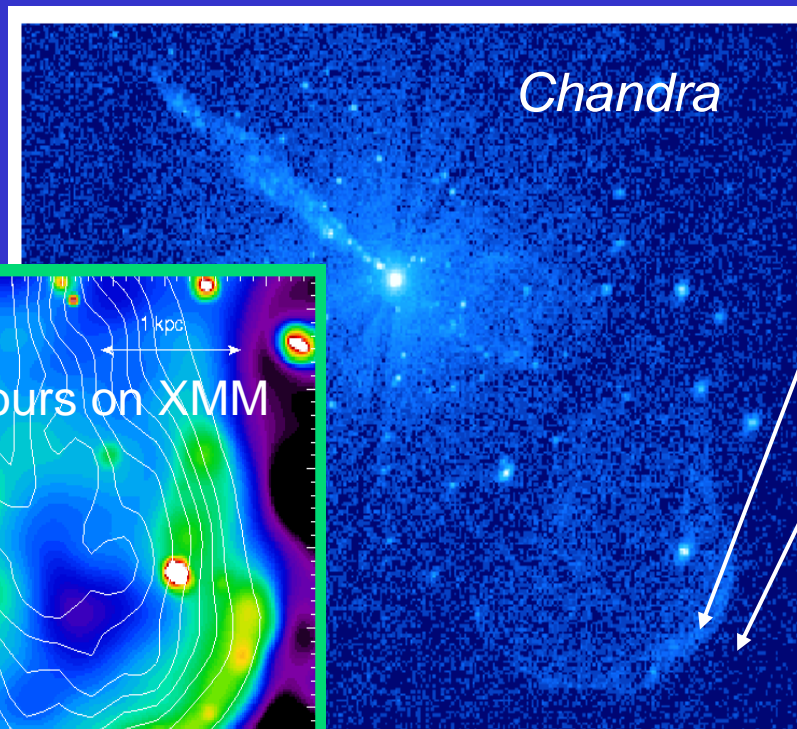
12 kpc



500 kpc



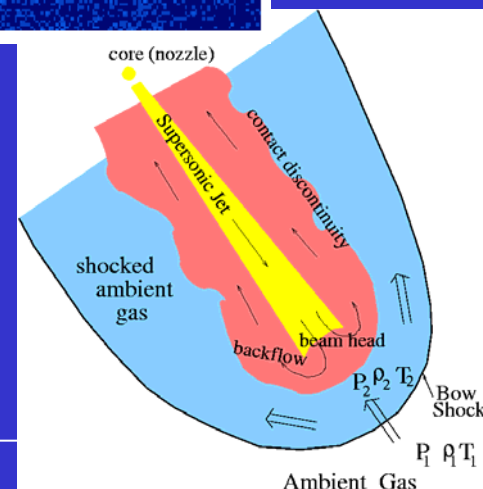
radio ~30'' resolution



Chandra

3 keV

0.3 keV



See Kraft et al. 2003, ApJ, 592, 129