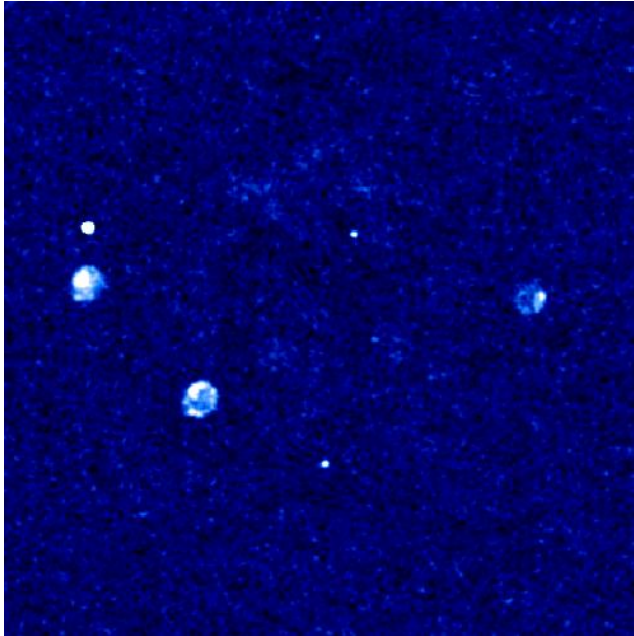
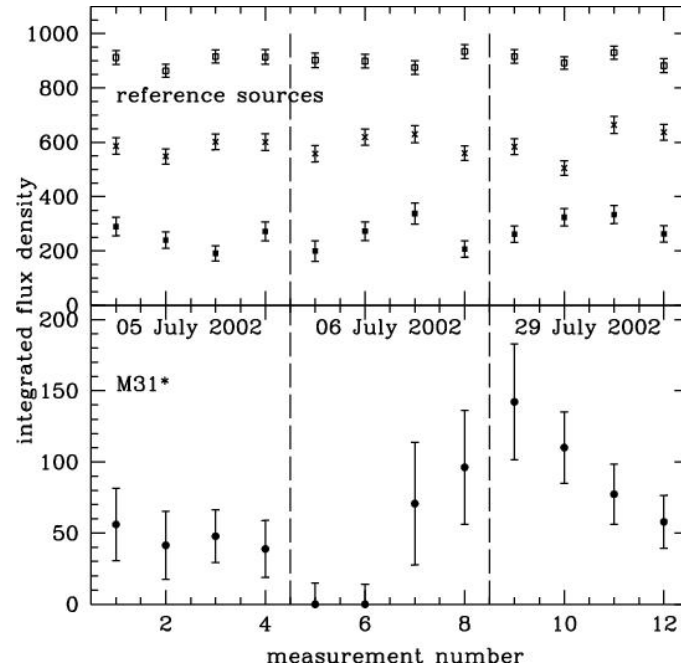


Center of Andromeda



Sensitive 4.9 GHz VLA image
Clearly shows three new SNRs,
The black hole M31* and other
Radio sources.
Two SNRs are also found in the
X-ray as well as M31*



M31* varies in flux density on
Month-long time scales in the
X-ray and radio regimes.
Recently, radio variability of
M31* is also seen on hour-long
Time scales -- X-ray too?