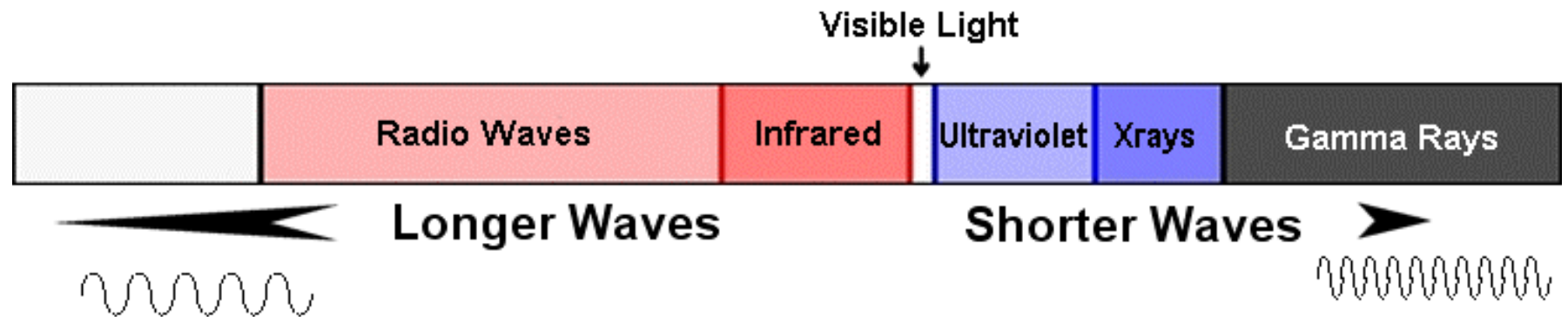


# The Very Long Baseline Array

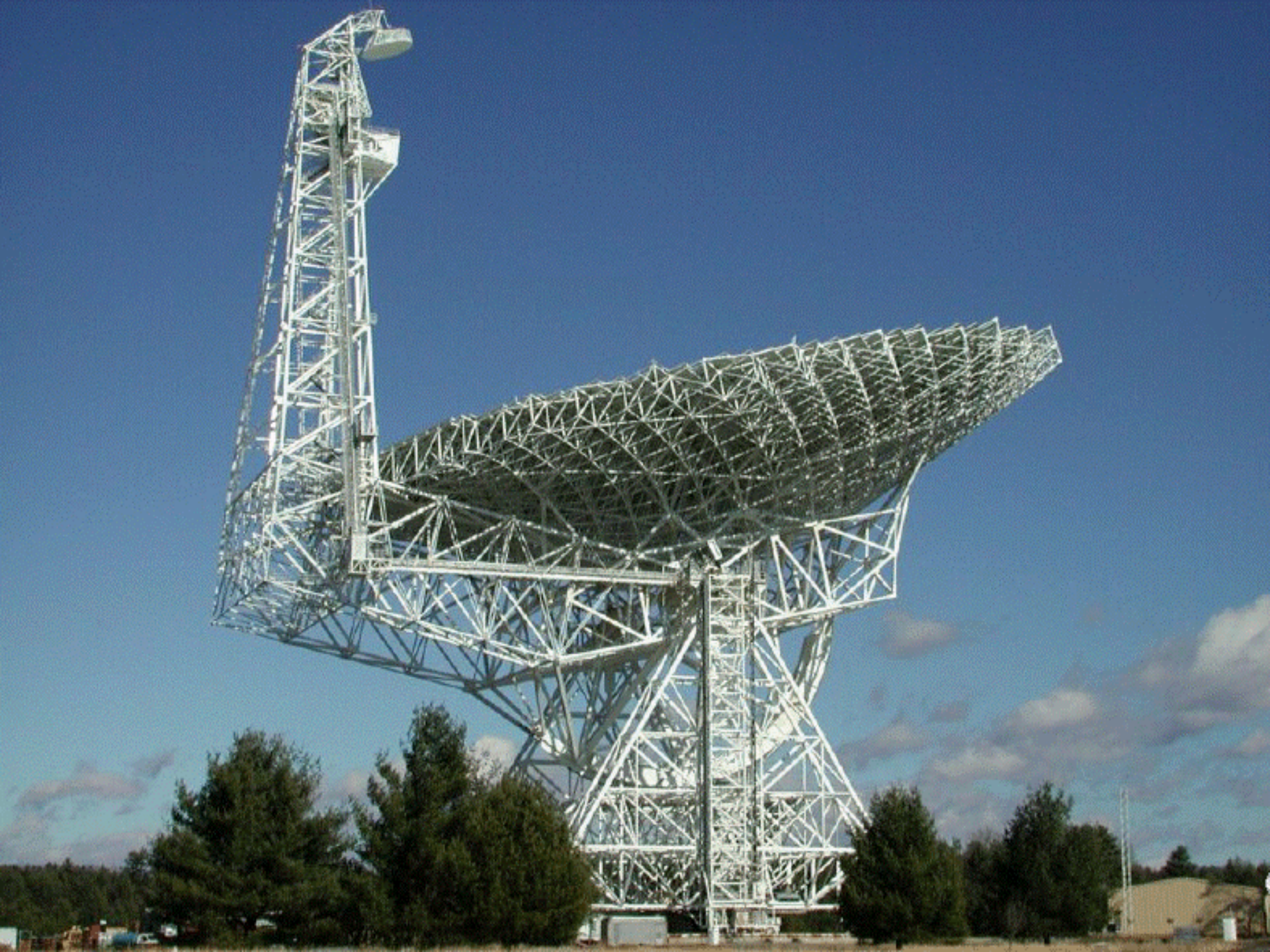
Brought to you by the National Radio  
Astronomy Observatory, a facility of the  
National Science Foundation operated under  
cooperative agreement with Associated  
Universities, Inc.



# Electromagnetic Spectrum













Mauna Kea, HI

Owens Valley, CA

Brewster, WA

Kitt Peak, AZ

Pie Town, NM

Los Alamos, NM

North Liberty, IA

Ft. Davis, TX

Hancock, NH

St. Croix, VI

Each antenna:

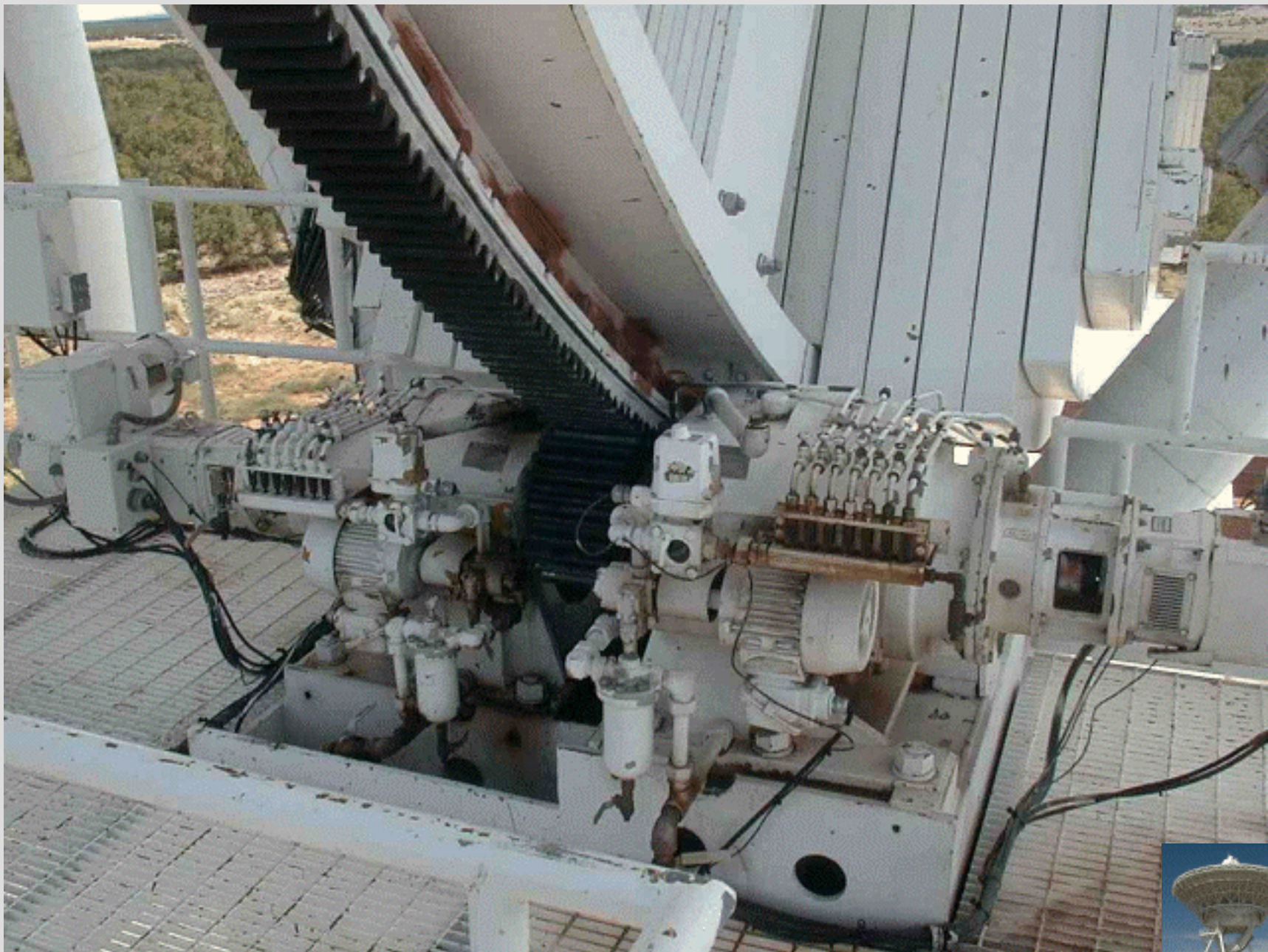
- weighs 240 tons
- is 25 meters (82') in diameter
- is as tall as a 10-story building

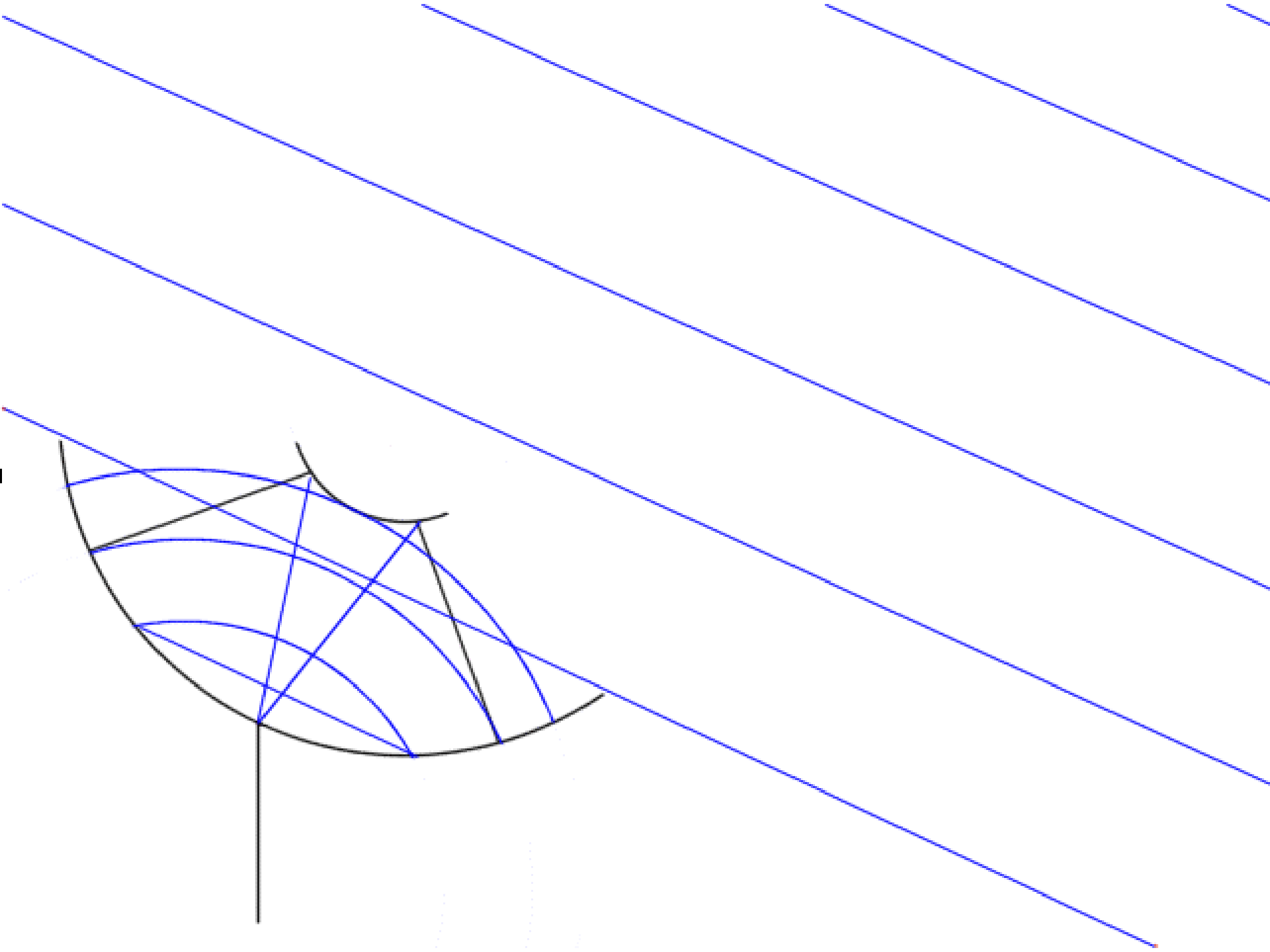








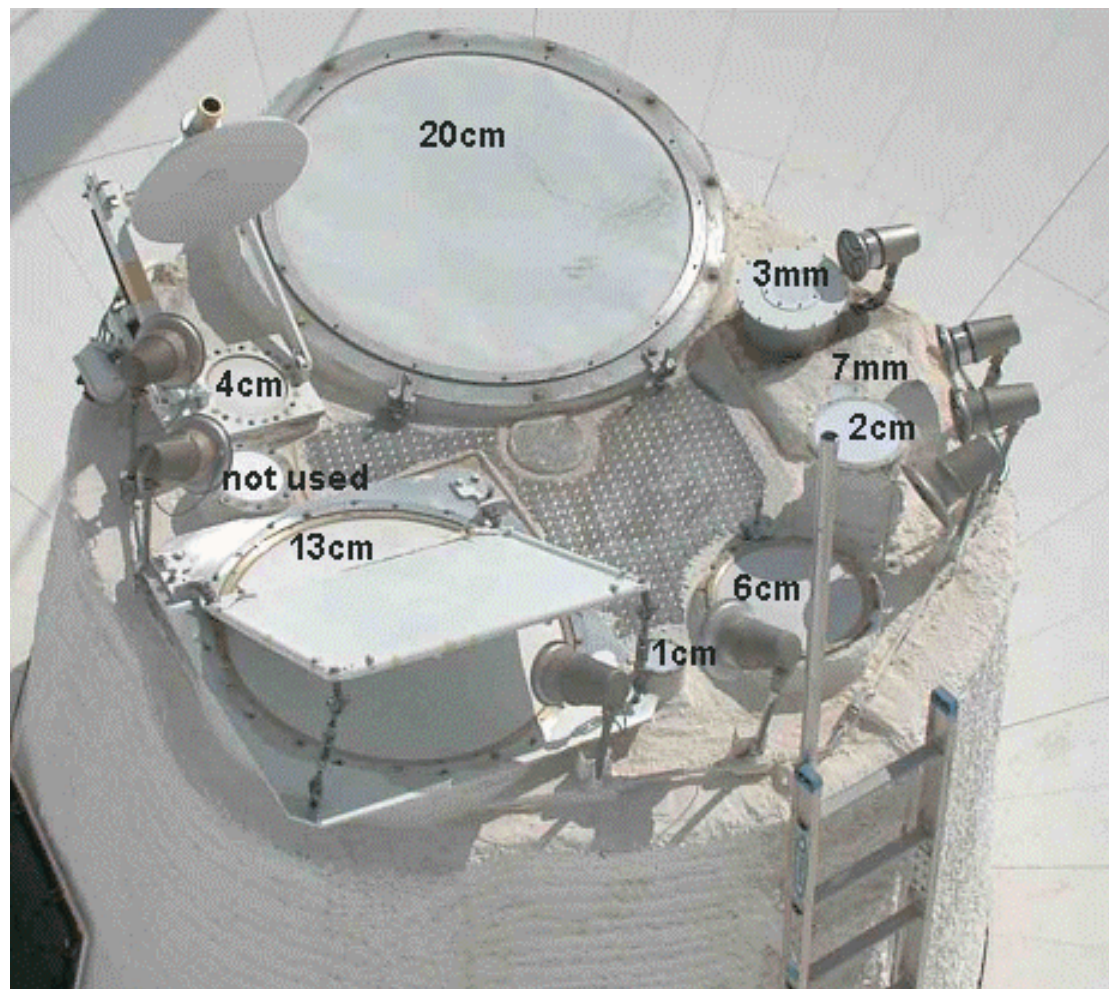






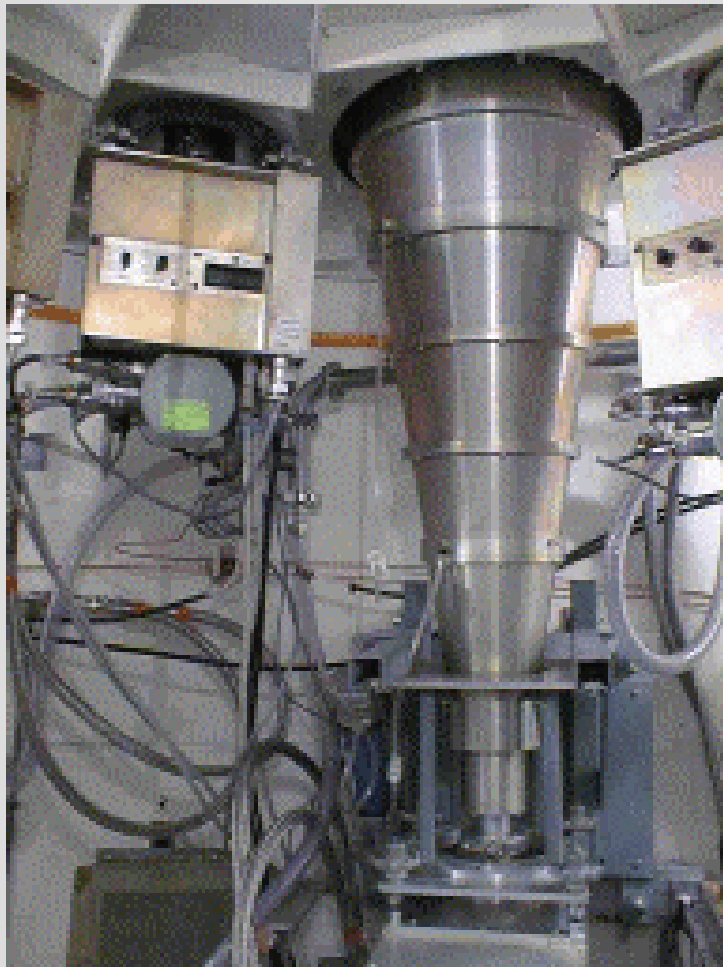


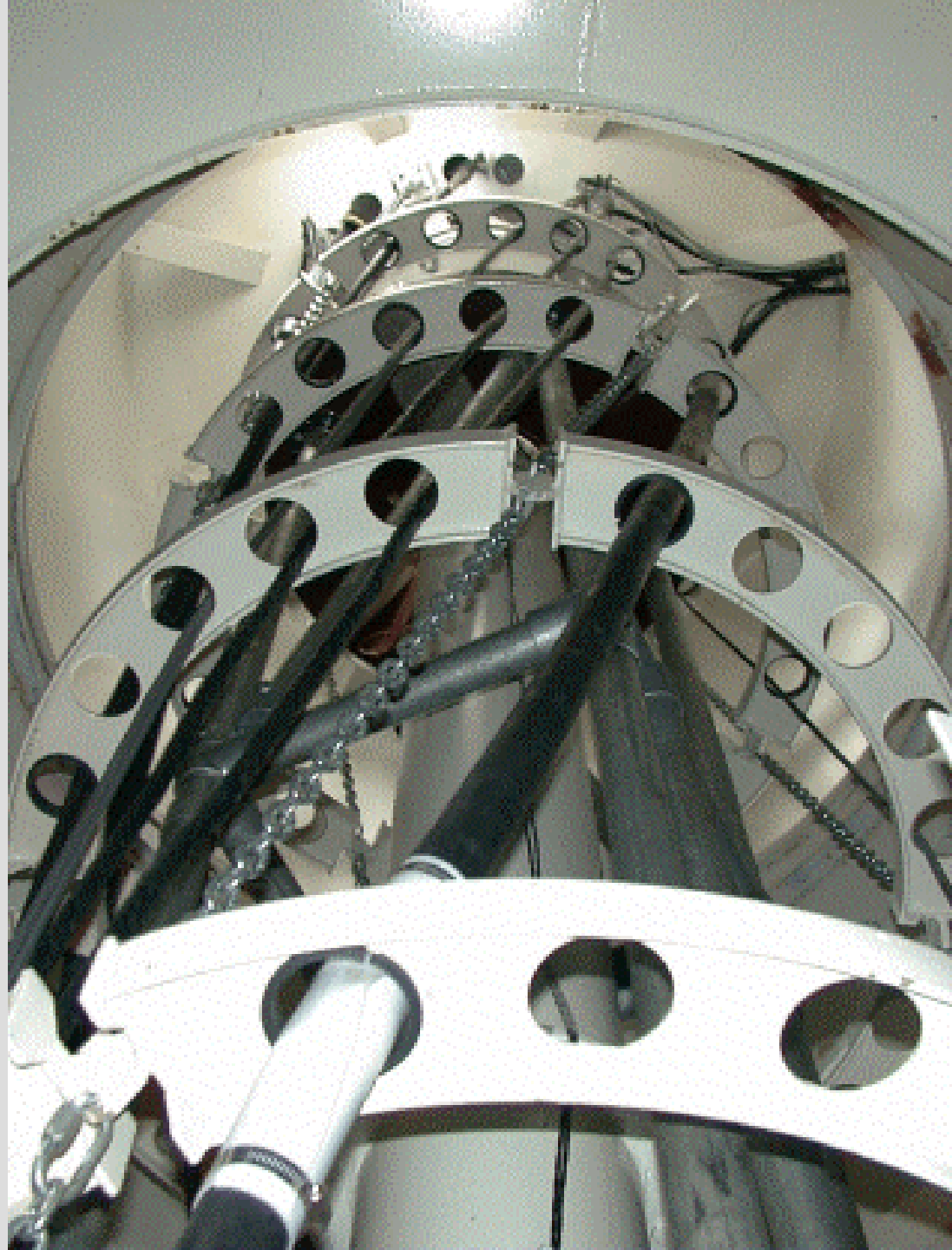
1.5GHz	20cm
2.3GHz	13cm
4.8GHz	6cm
8.4GHz	4cm
14GHz	2cm
23GHz	1.3cm
43GHz	7mm
86GHz	3mm



327MHz	90cm
610MHz	50cm











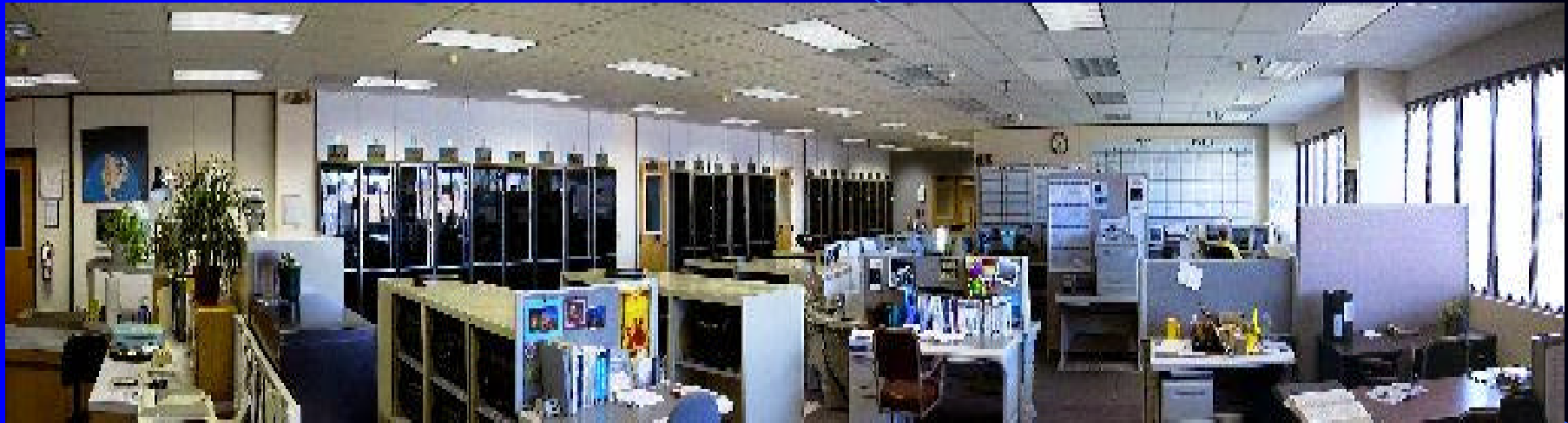




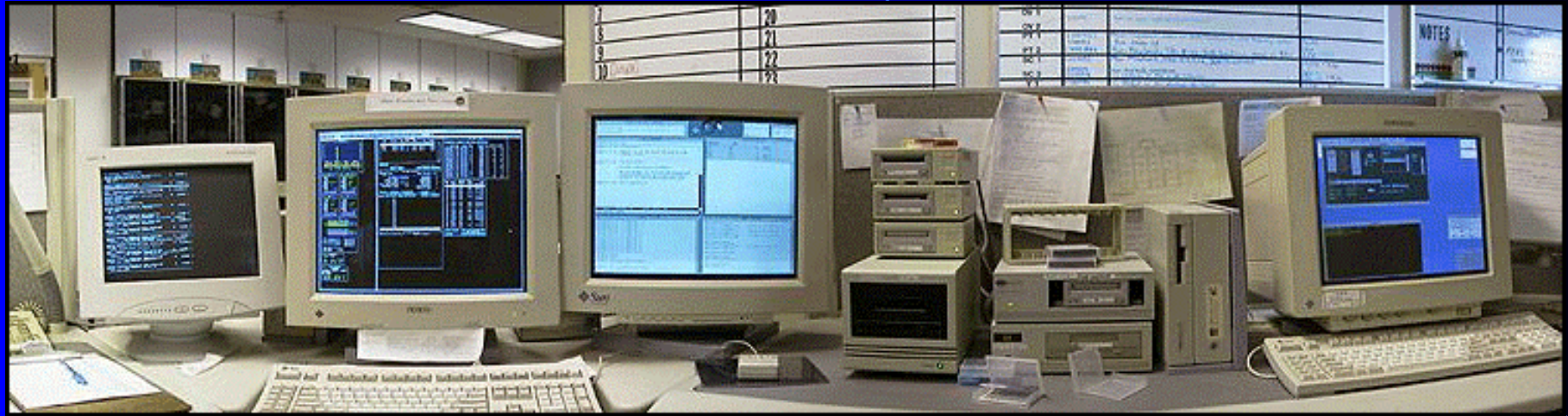




Array Operations Center,  
Socorro, New Mexico



# Array Operations



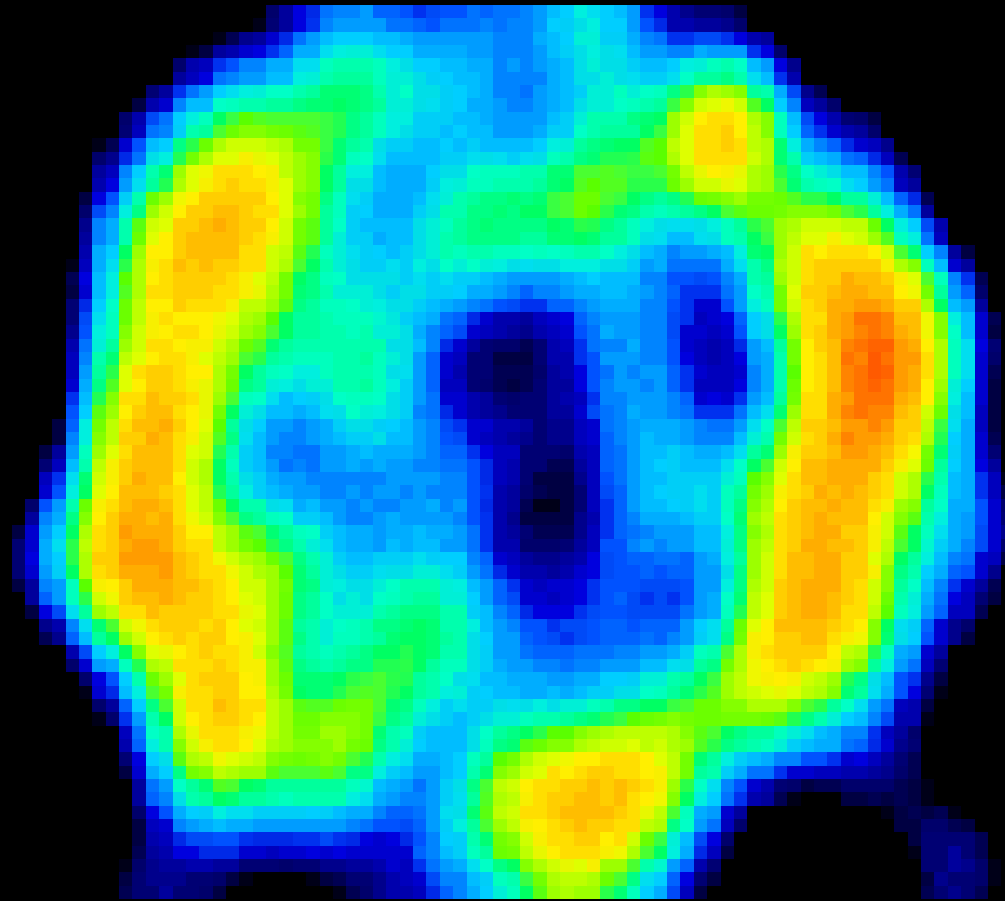
The correlator console







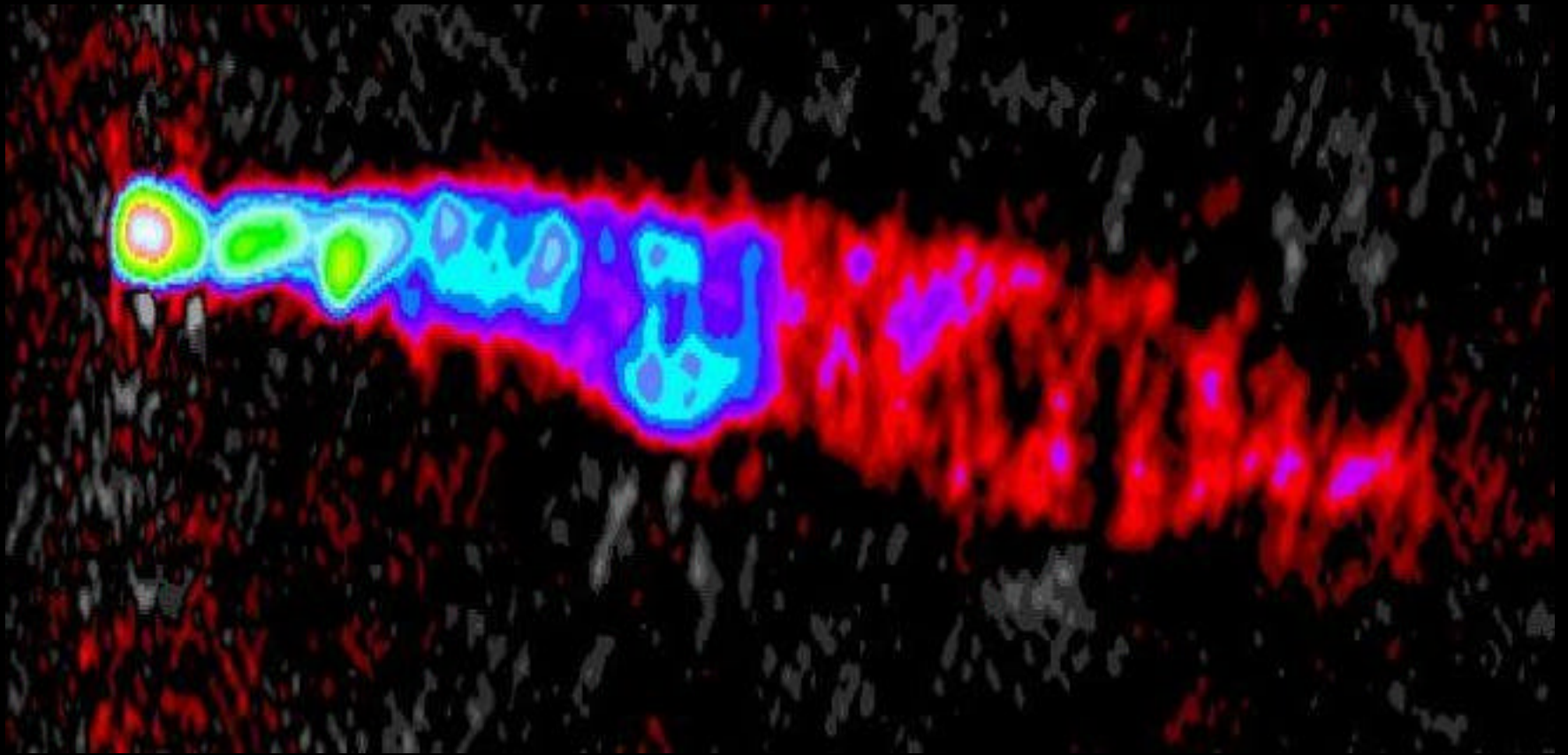
The array operator console



SN1993J

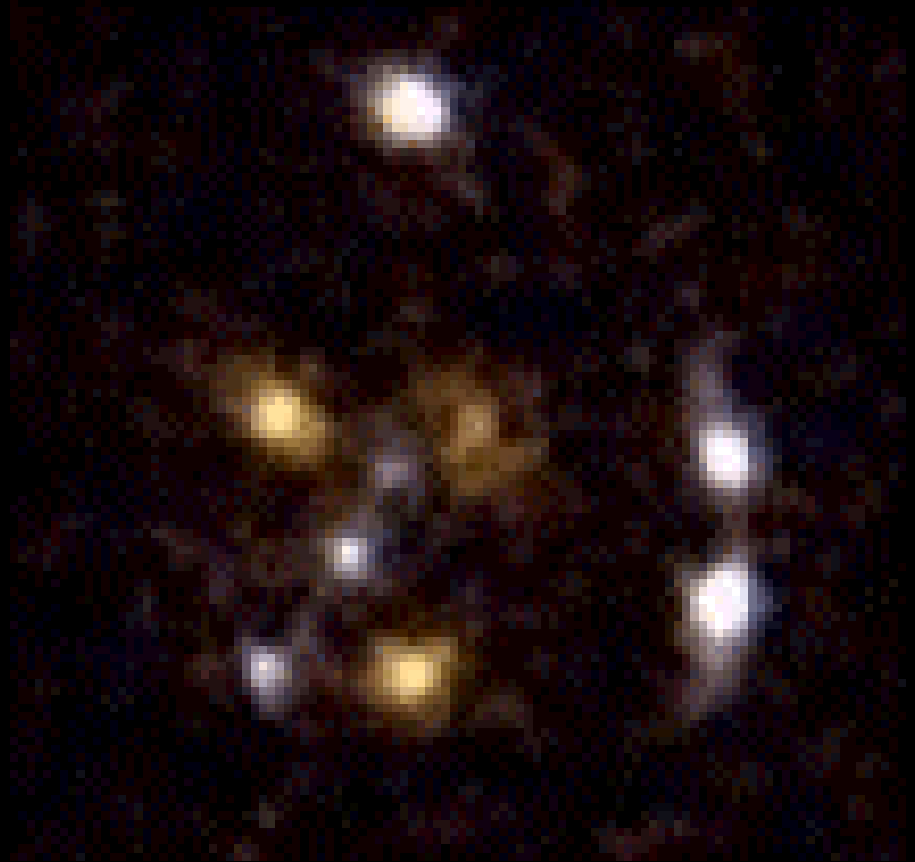
Studying the structure of supernovae





3C120

Studying the motion of jets  
moving near the speed of light.



CLASS B1359+154  
Studying gravitational lenses

**[www.nrao.edu](http://www.nrao.edu)**



# The Very Long Baseline Array

Brought to you by the National Radio  
Astronomy Observatory, a facility of the  
National Science Foundation operated under  
cooperative agreement with Associated  
Universities, Inc.