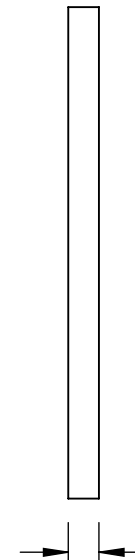
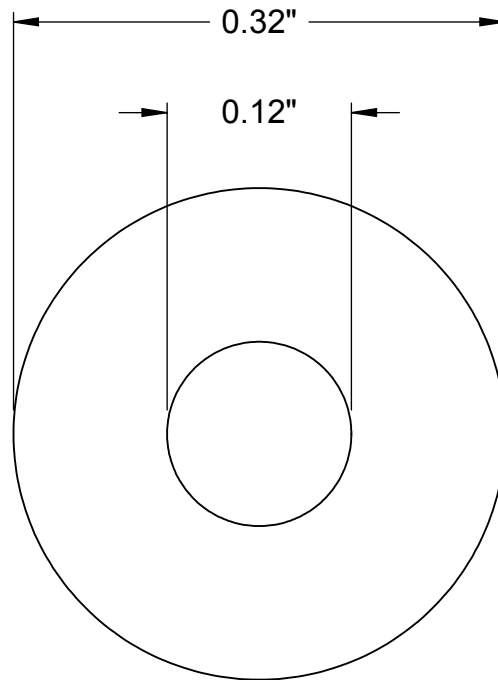
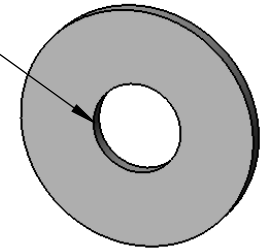


For #4
Screw Size



Washer thickness may vary from
0.02" to 0.04" in thickness.

McMASTER-CARR CAD

<http://www.mcmaster.com>
© 2009 McMaster-Carr Supply Company

Information in this drawing is provided for reference only.

PART NUMBER **98017A610**

300 Series Stainless Steel Washer
Mil. Spec. NAS 1149-CN432R