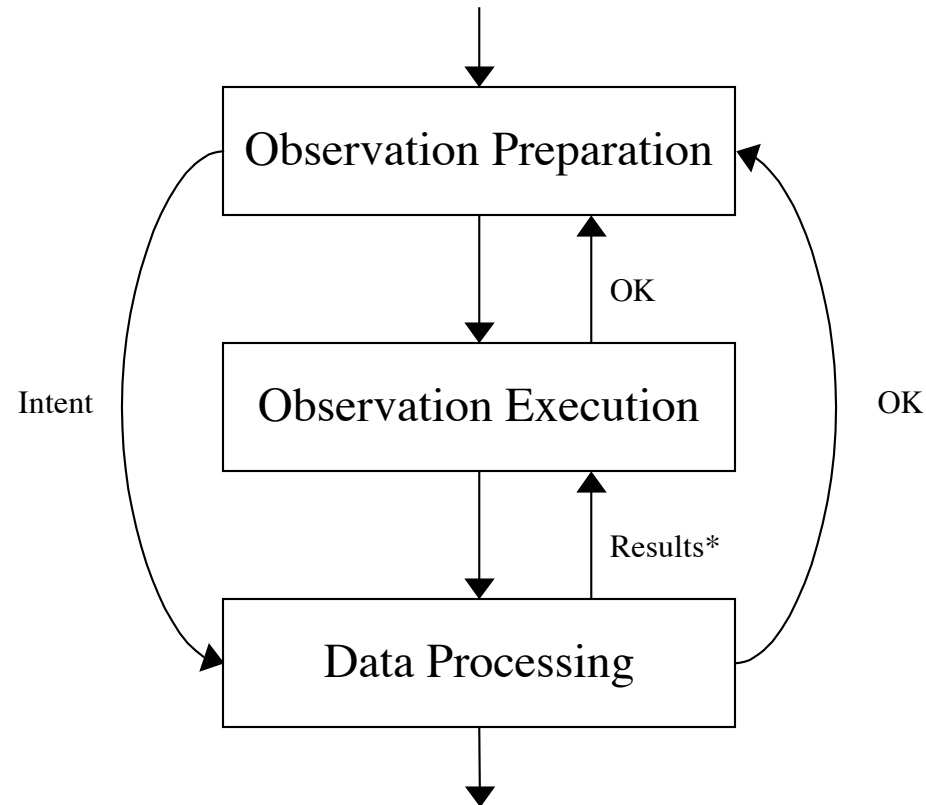


EVLA System Major Component Block Diagram

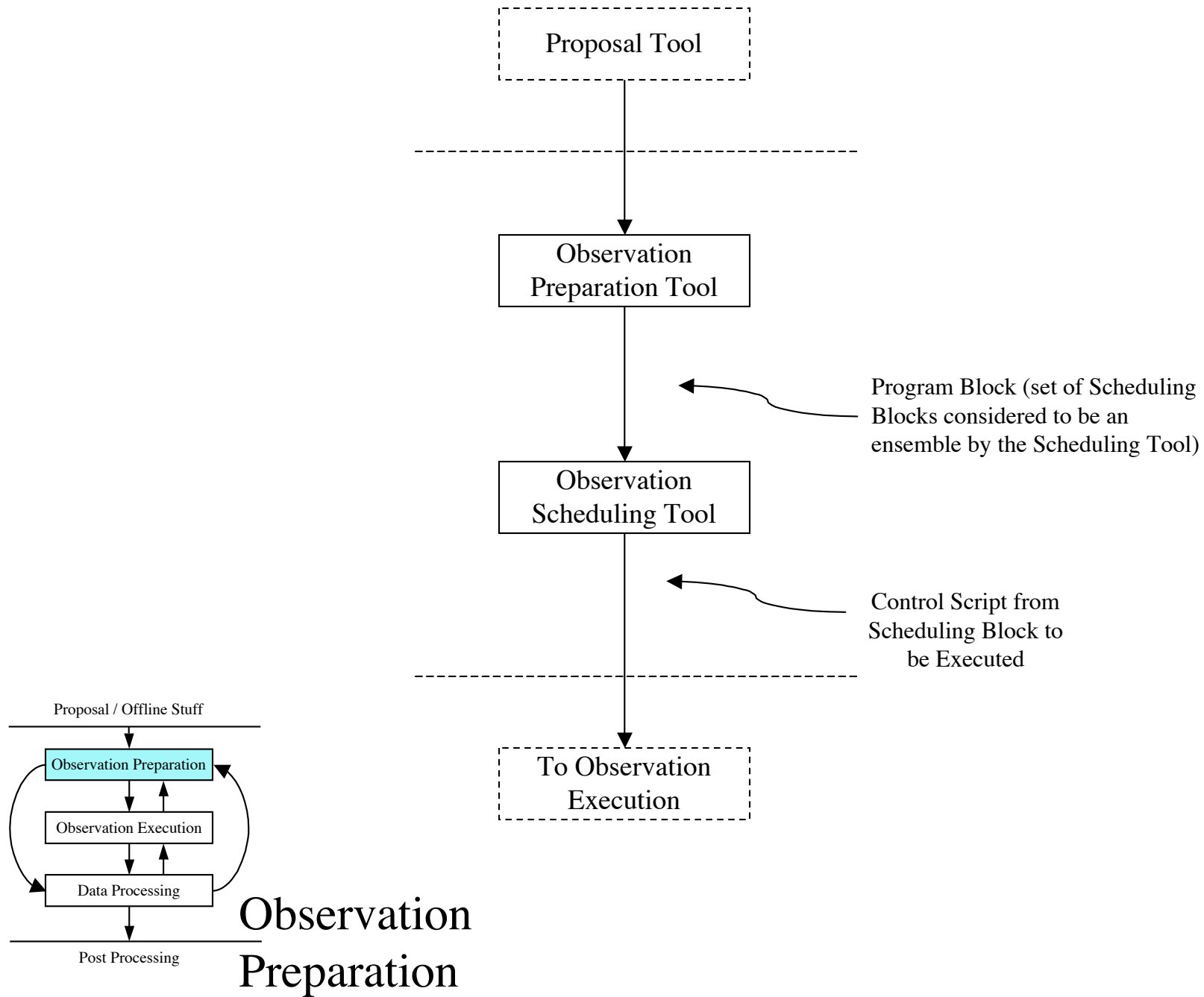
1. The first goal was to discover the major functional components of the system.
 - The system was divided into three functional areas
 1. Observation Preparation,
 2. Observation Execution,
 3. Data Processing.
 - The areas were populated with components gleaned from current diagrams and requirements specifications.
 - Lines were connected between components to represent interfaces
 - The interfaces are not defined
 - Only very broad, general, high-level, you-get-the-idea, descriptions of *what* flows between components is given.
2. The purpose of this document is to convey our idea of the system at the highest level for review by interested persons.
 - Since this first step represents the foundation upon which the rest of the system will be based, it is important that we all agree that it is correct, or correct it before proceeding.

Proposal / Offline Stuff



* “things like antsol
phases and pointing
results”

Post Processing



* The same interface is used by the Generic Device Browser, Operator/Tech Screens, other GUI's, telnet sessions, and local PDA/Laptop access.

